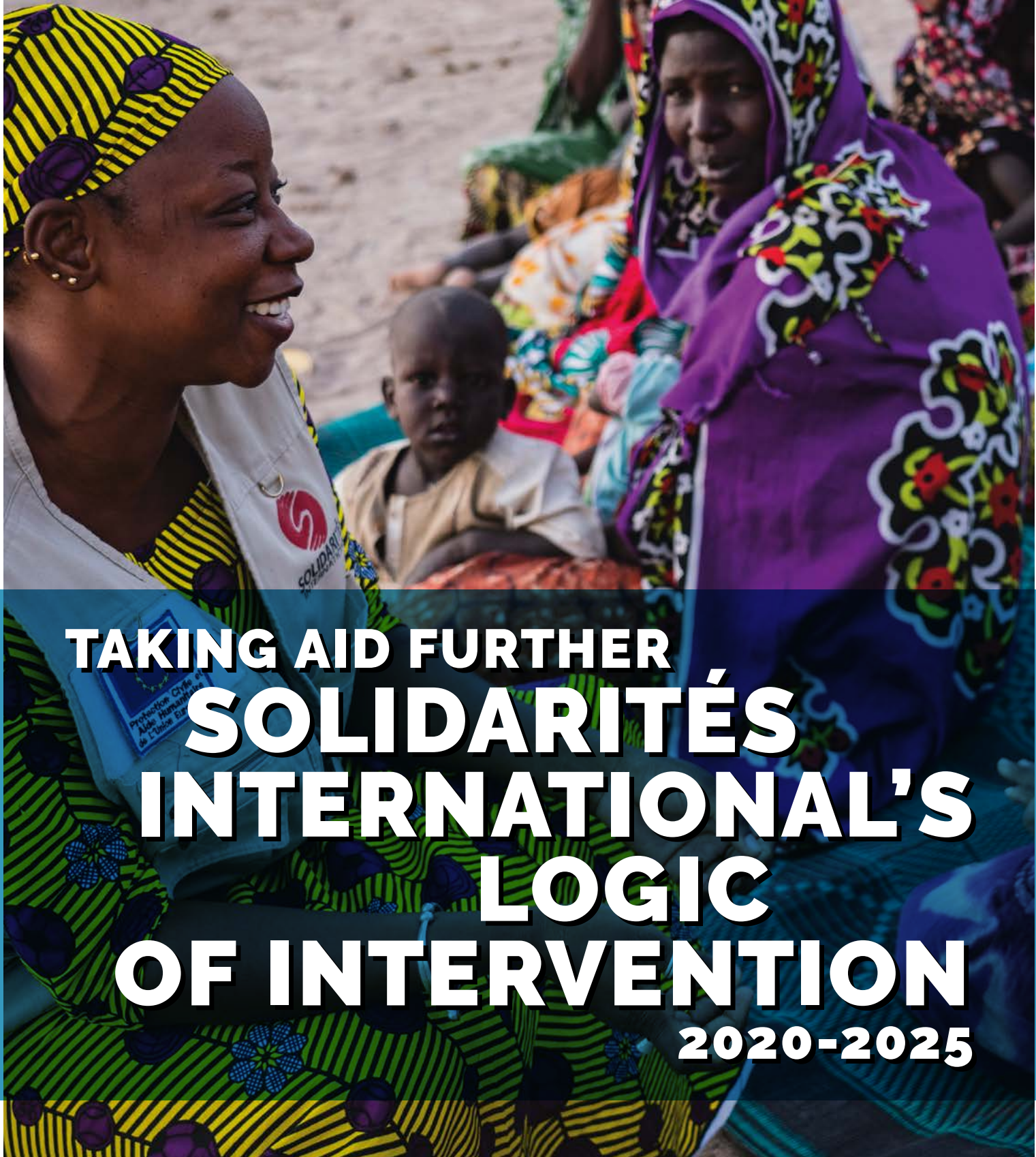




SOLIDARITÉS 40
INTERNATIONAL ANS



TAKING AID FURTHER
SOLIDARITÉS
INTERNATIONAL'S
LOGIC
OF INTERVENTION
2020-2025



Training session on the maintenance of boreholes in Makary, Cameroon, 2019
© Clément Kolopp

SOLIDARITÉS INTERNATIONAL'S LOGIC OF INTERVENTION

SOLIDARITÉS INTERNATIONAL is a humanitarian organisation that works to provide assistance and support to the most vulnerable people affected by a humanitarian crisis. **The quality of the humanitarian action** that SOLIDARITÉS INTERNATIONAL strives to implement is characterised by direct interventions that are tailored to populations' needs and co-built with them in a relation of trust. The aid is adapted to local contexts and respects and reinforces the dignity of the men, women and children in the areas where SOLIDARITÉS INTERNATIONAL intervenes.

This Logic of Intervention defines the organisation's **programmatic identity**, its overall coherence and places humanitarian impact at the centre of its action. Alongside its partners, **SOLIDARITÉS INTERNATIONAL'S local actions in the Water, Sanitation and Hygiene, Food Security and Livelihoods and Shelter sectors enable the most vulnerable people affected by a crisis to cope with shocks and pursue their life prospects.**

Resolving a humanitarian crisis does not occur in a linear fashion from emergency to development responses. Our intervention

logic reaffirms the fact that vital aid and activities that support basic needs are insufficient to provide a quality response and to reduce the impact of the crisis on most vulnerable people. SOLIDARITÉS INTERNATIONAL is therefore engaged in three different phases of intervention in degraded contexts: **shock absorption, early recovery, and risk preparedness and adaptation.** The organisation is committed to adapting its operational modalities according to the context dynamics and in a non-linear manner. In order to always be reactive and adaptable, SOLIDARITÉS INTERNATIONAL builds its work on regular situational analyses and a holistic understanding of issues, and resorts to **participatory approaches, governance support and capacity building of the populations.**

SOLIDARITÉS INTERNATIONAL interventions are guided by three outcomes: (1) **people are safe and protected from disease and malnutrition.** (2) **their livelihoods are strengthened.** (3) **they are better prepared to face new shocks.** They **complement** the work other stakeholders do in order to create **sustainable and multi-sectoral solutions** to maximise their weight and impact. This is particularly the case with medical actors to

protect people from malnutrition and water-borne diseases, or with protection actors to focus on people or groups with very high vulnerabilities and specific needs.

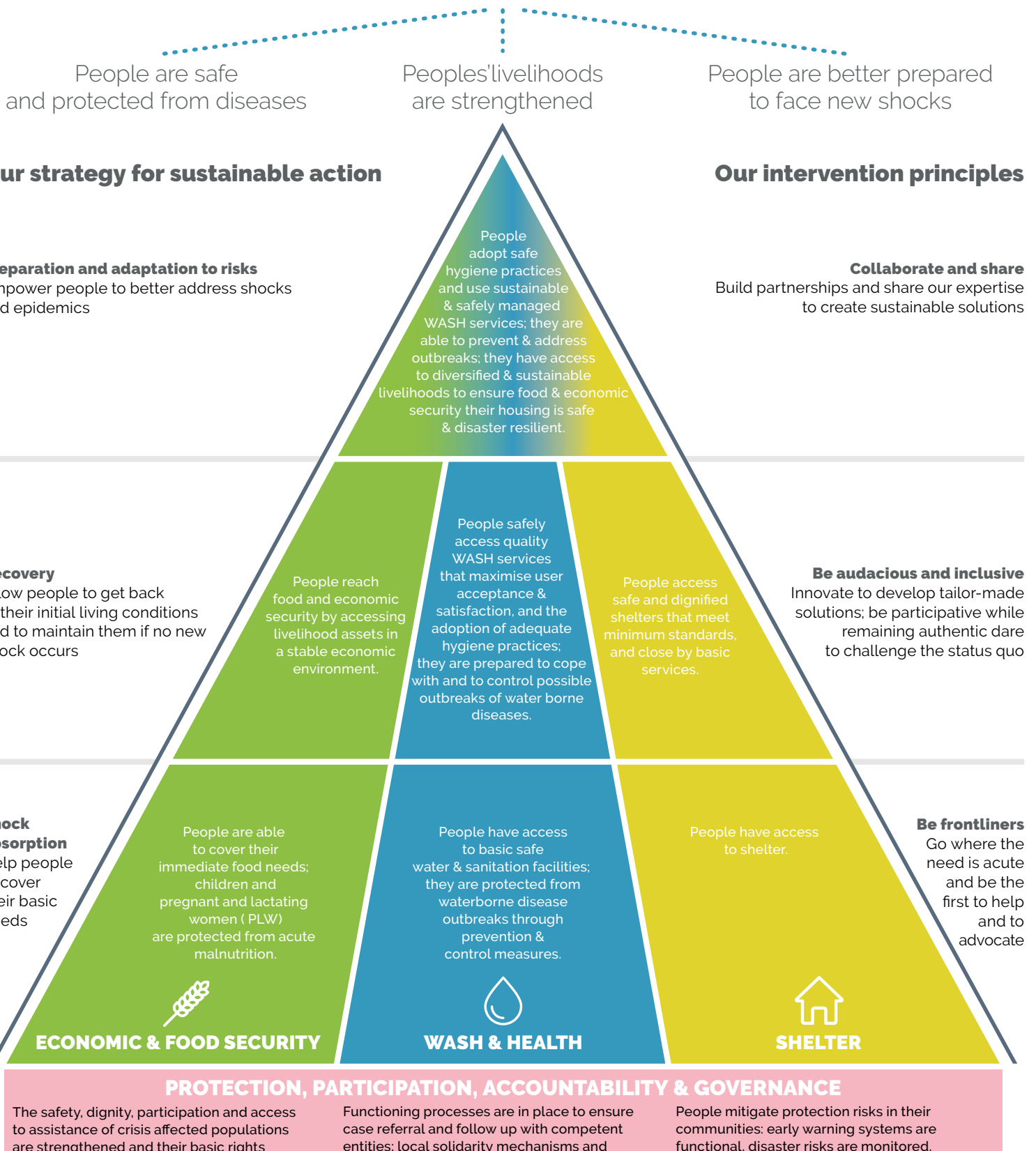
As a humanitarian actor and in order to ensure **proximity** and **front-line action**, SOLIDARITÉS INTERNATIONAL strives to reach crisis-affected populations, particularly in the **most remote areas.** By **analysing the risks** and mainstreaming protection in all its programmes, SOLIDARITÉS INTERNATIONAL aims to create a virtuous cycle of community acceptance that **enhances access and maximises humanitarian impact.** SOLIDARITÉS INTERNATIONAL thus ensures that its interventions do not create additional risks for the targeted populations, and that particularly vulnerable groups or individuals are able to access assistance and services.

The main principles on which SOLIDARITÉS INTERNATIONAL bases its interventions, such as proximity, reactivity, authenticity, professionalism and innovation, reinforce the organisation's specificity and added value.

SOLIDARITÉS INTERNATIONAL'S STRATEGY FOR SUSTAINABLE RESPONSES

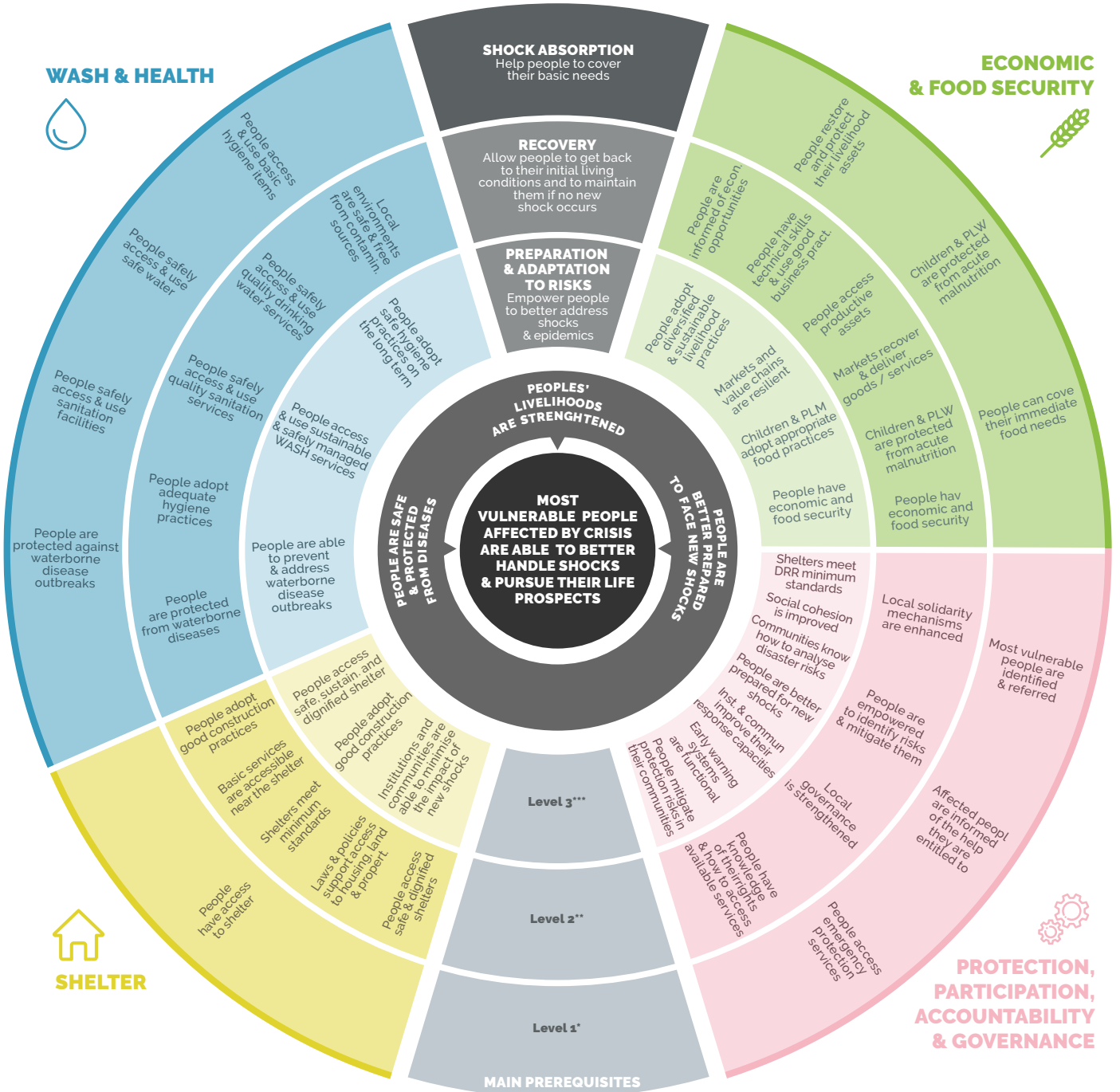
SI's work is guided by one main ambition and three intervention principles that define the organisation's identity.

OUR OBJECTIVE IS TO SUPPORT MOST VULNERABLE PEOPLE AFFECTED BY CRISIS TO BETTER HANDLE SHOCKS AND PURSUE THEIR LIFE PROSPECTS



SOLIDARITÉS INTERNATIONAL'S VISION OF CHANGE IN DEGRADED CONTEXTS

SOLIDARITÉS INTERNATIONAL carefully and knowingly designs its interventions by analysing context dynamics and access conditions and risks. With partners when relevant, its teams provide a mosaic of integrated activities that address the immediate needs of most vulnerable people, strengthen their livelihoods and help them prepare for potential future shocks.



* Level 1
Minimal access by humanitarian actors to populations is possible
Minimal access of populations to humanitarian services and assistance is possible without major health risks to individuals.
Humanitarian principles and the Do no harm principle are respected

** Level 2
Continuous humanitarian access to populations is possible for SI or its intervention partner(s)
Humanitarian needs are not withheld by the authorities in place

*** Level 3
Administrative and political interference does not significantly affect SI programming
The political and social context is stable
Staff and humanitarian resources are not subject to violence





OUR PARTNERS



WASH & HEALTH PARTNERS

- Global WASH Cluster
- French Water Partnership (PFE)
- Coalition Eau
- Baby WASH Coalition
- Sustainable Sanitation Alliance
- pS-Eau
- Global Task Force on Cholera Control



FOOD SECURITY AND LIVELIHOODS PARTNERS

- Global Food Security Cluster
- French DRR network (REPR)



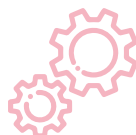
EMERGENCY RESPONSE COORDINATION

- SYNERGIES
- Alliance Urgences



SHELTER PARTNERS

- Global Shelter Cluster



CROSS-CUTTING PARTNERS

- ALNAP
- Start Network
- CaLP
- Bond
- European Interagency Security Forum (EISF)
- Bioforce



CONTACTS

SOLIDARITÉS INTERNATIONAL

Thierry BENLAHSEN

Director of Operations
tbenlahsen@solidarites.org

Anne-Lise LAVAU

Deputy Director of Operations for Programme
allavaur@solidarites.org

info@solidarites.org

Report

SOLIDARITÉS INTERNATIONAL

Graphic design and illustrations

Frédéric Javelaud; Wavestone

Photo couverture

Water point in Gado camp
in Garoua Boulai, Cameroon, 2019
© Adrienne Surprenant

Creative Commons



This document is licensed under the Creative Commons Attribution-NonCommercial-NoDerivs 4.0 International License.